

Attachment B

County of Santa Clara

Ninth Amendment to the Countywide Nondisposal Facility Element

February 2010

Local Public Hearings & Adoption

City of San José: February 1, 2010

County of Santa Clara:

CalRecycle Review & Approval

Submitted:

Approved:

NINTH AMENDMENT TO THE COUNTY OF SANTA CLARA COUNTYWIDE NONDISPOSAL FACILITY ELEMENT

The Countywide Nondisposal Facility Element (NDFE) was originally adopted by the Board of Supervisors on December 13, 1994. The First Amendment was adopted on June 3, 1997, replacing and superseding the original document. The Second Amendment was adopted on August 5, 1997, and it replaced and superseded the NDFE and the First Amendment. On September 15, 1998, on December 7, 1999, on May 9, 2000, on December 13, 2003, on August 25, 2009, on February 23, 2010, the Third, Fourth, Fifth, Sixth, Seventh, and Eighth Amendments were adopted. The Ninth Amendment supersedes and replaces the County of Santa Clara Second, Third, Fourth, Fifth, Sixth, Seventh, and Eighth Amendments to the Countywide Nondisposal Facility Element as the NDFE for the County of Santa Clara Unincorporated Area and for the City of San José. It may be adopted by other jurisdictions.

All facilities listed below were included in the Second Amendment, with the exception of those that are noted.

TABLE OF CONTENTS

Introduction (Ninth Amendment - revised 2/11)	1
City of Palo Alto Green Composting Facility (Sixth Amendment 12/03 - revised)	
Map: City of Palo Alto Green Composting Facility	2
Fact Sheet #1: Palo Alto Green Composting Facility	3
Guadalupe Landfill	
Map: Guadalupe Landfill	4
Fact Sheet #2: Guadalupe Landfill	5
Material Recovery Systems Facility	
Map: Material Recovery Systems Facility	6
Fact Sheet #3: Material Recovery Systems Facility	7
Newby Island Compost Facility (Seventh Amendment 8/09 – revised)	
Map: Newby Island Compost Facility	8
Fact Sheet #4: Newby Island Compost Facility	9
Zanker Materials Processing Facility (Sixth Amendment 12/03 - revised)	
Map: Zanker Materials Processing Facility	10
Fact Sheet #5: Zanker Materials Processing Facility	11
The Recyclery at Newby Island (Seventh Amendment 8/09 – revised)	
Map: The Recyclery at Newby Island	12
Fact Sheet #6: The Recyclery at Newby Island	13
San Martin Transfer Station (Sixth Amendment 12/03 - revised)	
Map: San Martin Transfer Station	14
Fact Sheet #7: San Martin Transfer Station	15
Sunnyvale Materials Recovery and Transfer Station (SMaRT) Station	
Map: SMaRT Station	16
Fact Sheet #8: SMaRT Station	17
Exhibit A	18

Zanker Road Class III Landfill (Sixth Amendment 12/03 - revised)	
Map: Zanker Road Class III Landfill	19
Fact Sheet #9: Zanker Road Class III Landfill	20
Dunne Ranch Compost Facility (Pages 21, 22) has been deleted (Fourth Amendment 10/99)	
Z-Best Composting Facility	
Map: Z-Best Composting Facility	23
Fact Sheet #11: Z-Best Composting Facility	24
GreenWaste Recovery Facility (Third Amendment 6/98 - added, Fourth Amendment 10/99 - revised)	
Map: GreenWaste Recovery Facility	25
Fact Sheet #12: GreenWaste Recovery Facility	26
ComCare Farms Composting Facility (pages 27-28) has been deleted (Eighth Amendment 6/10)	
South Valley Organics (Fourth Amendment 10/99 – added, Sixth Amendment 12/03 - revised)	
Map: Pacheco Pass Landfill Composting Facility	29
Fact Sheet #14: South Valley Organics	30
Butterick Enterprises Recyclery	
Map: Butterick Enterprises Recyclery	31
Fact Sheet #15: Butterick Enterprises Recyclery	32
Premier Recycling Facility (Fifth Amendment 3/00 - added)	
Map: Premier Recycling Facility	33
Fact Sheet # 16: Premier Recycling Facility	34
Environmental Management Systems Facility (pages 35-36) has been deleted (Seventh Amendment 8/09)	
California Waste Solutions Recycling & Transfer Station (Sixth Amendment 12/03 - added)	
Map: California Waste Solutions Recycling & Transfer Station	37
Fact Sheet # 18: California Waste Solutions Recycling & Transfer Station	38
Pacific Coast Recycling, Inc. Facility (Sixth Amendment 12/03 - added)	
Map: Pacific Coast Recycling, Inc. Facility	39
Fact Sheet # 19: Pacific Coast Recycling, Inc. Facility	40
Pacheco Pass Transfer Station (Seventh Amendment 8/09 - added)	
Map: Pacheco Pass Transfer Station	41
Fact Sheet # 20: Pacheco Pass Transfer Station	42
Stanford Recycling Center and Direct Transfer Facility (Seventh Amendment 8/09 - added)	
Map: Stanford Recycling Center and Direct Transfer Facility	43
Fact Sheet # 21: Stanford Recycling Center and Direct Transfer Facility	44
GreenTeam of San Jose Material Recovery Facility and Transfer Station (Eighth Amendment 6/10 - added)	
Map: GreenTeam of San Jose Material Recovery Facility and Transfer Station	45
Fact Sheet # 22: GreenTeam of San Jose Material Recovery Facility and Transfer Station	46

GreenWaste Material Facility and Transfer Station (Eighth Amendment 6/10 - added)	
Map: GreenWaste Material Facility and Transfer Station	47
Fact Sheet # 23: GreenWaste Material Facility and Transfer Station	48
Recology Silicon Valley Processing and Transfer Facility (Ninth Amendment 2/11 - added)	
Map: Recology Silicon Valley Processing/Transfer Station	49
Fact Sheet # 24: Recology Silicon Valley Processing and Transfer Facility	50
Zero Waste Energy Development Company Anaerobic Digestion Facility (Ninth Amendment 2/11 - added)	
Map: Site Location – 9 Par Landfill Site	51
Map: Site Vicinity Map – 9 Par Landfill Site	52
Fact Sheet # 25: Zero Waste Energy Development Company’s Anaerobic Digestion Facility	53
Green Earth Management LLC Kings Row Recycling Facility (Ninth Amendment 2/11 - added)	
Map: 650 Kings Row	54
Fact Sheet # 26: Green Earth Management LLC Kings Row Recycling Facility	55
Environmental Resource Recovery, Inc., (Valley Recycling) (Ninth Amendment 2/11 - added)	
Map: Site Location Map – Valley Recycling	56
Fact Sheet # 27: Environmental Resource Recovery, Inc., DBA Valley Recycling	57
Smurfit-Stone Recycling San Jose Facility (Ninth Amendment 2/11 - added)	
Map: Smurfit-Stone Recycling San Jose Facility Location Map	58
Fact Sheet # 28: Smurfit-Stone Recycling San Jose Facility	59

**NINTH AMENDMENT TO THE
COUNTY OF SANTA CLARA
COUNTYWIDE NONDISPOSAL FACILITY ELEMENT**

Introduction

California Public Resources Code (PRC) Sections 41730 et seq., require California cities and counties to prepare and adopt a Nondisposal Facility Element (NDFE) for all existing or proposed nondisposal facilities which will be needed to implement local Source Reduction and Recycling Elements. A nondisposal facility is any solid waste facility required to obtain a solid waste facility permit except a disposal facility or transformation facility (PRC Section 40151).

In 1994, the County of Santa Clara's Integrated Waste Management Program prepared the Countywide NDFE for adoption by the cities of: Campbell, Cupertino, Gilroy, Los Altos, Milpitas, Monte Sereno, Morgan Hill, Mountain View, San Jose, Santa Clara, Saratoga, and Sunnyvale; the towns of Los Altos Hills and Los Gatos; and the County of Santa Clara Unincorporated Area. The City of Palo Alto prepared and adopted its own NDFE. In March 1997, the First Amendment to the Countywide NDFE was prepared by the IWM Program for use by jurisdictions as necessary. The Second Amendment was approved in July 1997; the Third in June 1998; the Fourth in December 1999; the Fifth in May 2000; the Sixth in December 2003; and the Seventh in August 2009. In February 2010, the Eighth Amendment was approved by the San José City Council and the Board of Supervisors, replacing and superseding all previous versions as the NDFE for the County of Santa Clara Unincorporated Area and for the City of San José.

The Countywide NDFE identifies transfer stations, material recovery facilities, yard waste composting facilities, and landfills necessary to implement local waste diversion goals. .

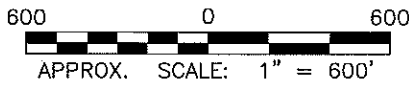
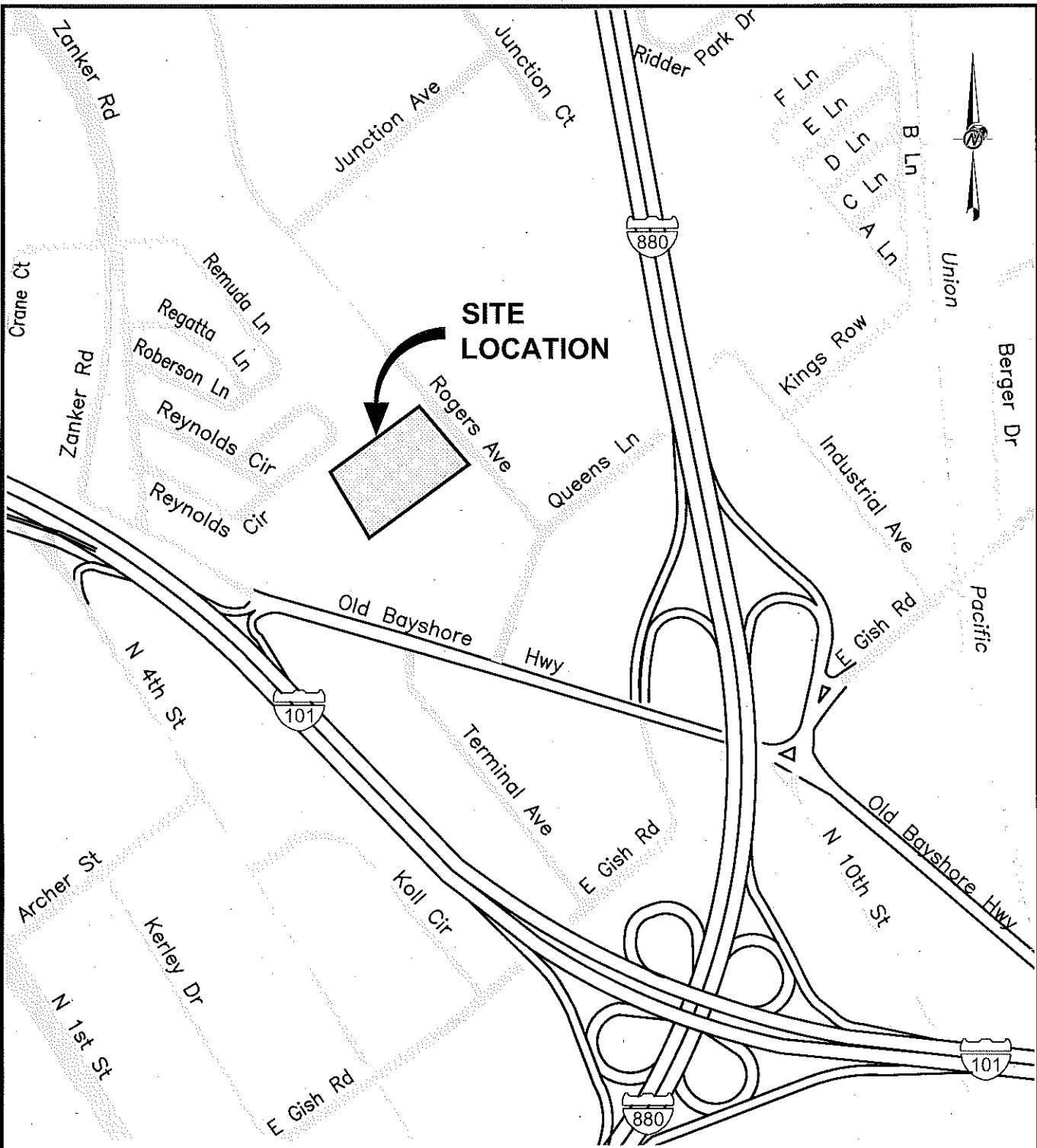
The Ninth Amendment to the Countywide NDFE

Five operators of existing or planned facilities, Recology Silicon Valley, Zero Waste Energy Development Company, Green Earth Management LLC, Environmental Resource Recovery, Inc., and Smurfit-Stone Recycling San Jose have begun the process to apply for new or revised solid waste facility permits from the San José Local Enforcement Agency (LEA) or have indicated that they may do so in the future. This Ninth Amendment to the Countywide NDFE (Amendment) is necessary in order for the LEA to find the proposed facilities in conformance and for the permit applications to be accepted as complete.

Maps and fact sheets for these facilities are attached as pages 49 – 59 of the amended NDFE.

This Amendment was submitted to the Recycling and Waste Reduction Commission of Santa Clara County, acting as the County Local Task Force, for review and comment regarding the regional impacts of the additional facilities being identified in the Amendment, in accordance with the requirements of PRC Sections 41734 (a) and (b). As indicated by PRC Section 41735 (a), adoption of the Amendment is not subject to environmental review under the California Environmental Quality Act (CEQA). The Amendment supersedes and replaces the Eighth Amendment as the NDFE for the County of Santa Clara Unincorporated Area and for the City of San José. It may be adopted by other jurisdictions.

XREF Path: I:\MCI_11\loc: ABBREV_S\N\NOTES\IP LOC\MAP-1.jpg LOC\MAP-2.jpg I:\MCI_11\loc: ABBREV_S\N\NOTES\IP LOC\MAP-3.jpg I:\MCI_11\loc: ABBREV_S\N\NOTES\IP LOC\MAP-4.jpg
 File: C:\:\Projects\082_07250 (Recovery Station)\Drawings\SV-15-150\Map.dwg Layout: Layout1 Plot Date: 2/2/10 10:52 AM User: kroyal



PROJECT	RECOLOGY SILICON VALLEY PROCESSING/TRANSFER STATION 1675 ROGERS AVENUE, SAN JOSE, CALIFORNIA		
TITLE	LOCATION MAP		
Golder Associates Sunnyvale, California	PROJECT No.	093-97490	FILE No.
	DESIGN	KLT	3/2/10
	CADD	KLT	3/2/10
	CHECK	RDH	3/2/10
REVIEW	RDH	3/2/10	SCALE AS SHOWN
			REV. 0
			FIG. 1

**Fact Sheet #24
Recology Silicon Valley Processing and Transfer Facility
San Jose, California**

TYPE OF FACILITY:

The Recology Silicon Valley Processing and Transfer Facility is an existing medium-volume transfer station that is permitted to receive up to 99 tons per day of mixed mixed waste materials including organic material, residential and commercial refuse and inert material. It is proposed to expand the facility to receive and process recyclable, organic and waste materials from the City of San Jose commercial recycling program and other sources.

FACILITY CAPACITY:

The facility is currently permitted to receive up to 99 tons per day. The facility expansion will be designed to handle up to 600 tons per day of residential and commercial recyclable, organic and waste materials.

ESTIMATED DIVERSION:

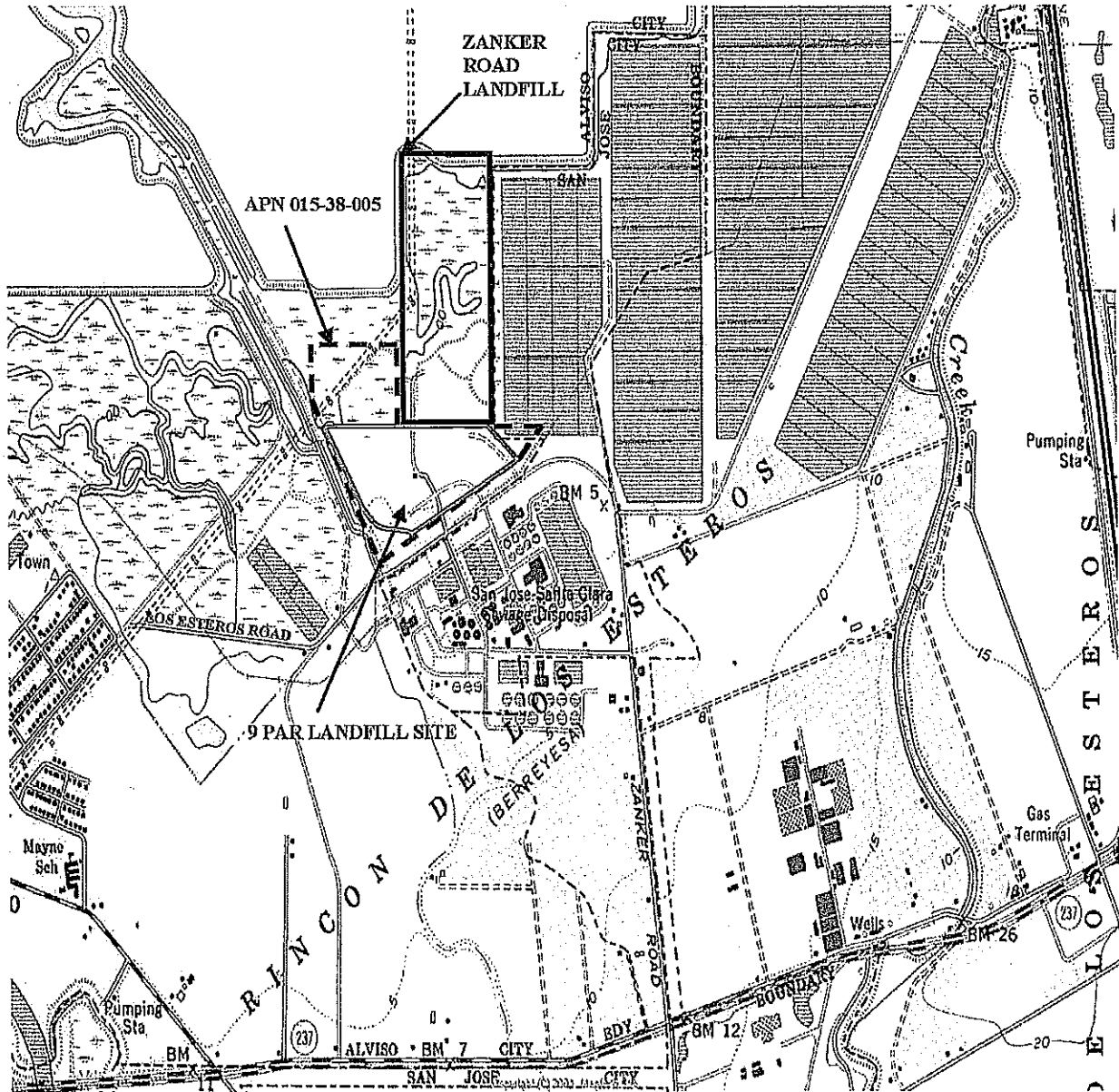
Processing and transfer will occur at the facility. The estimated overall diversion rate is above 60 percent. Recovered materials will be transported from the facility for further processing or to markets. Residual materials will be transported to a permitted disposal site.

JURISDICTIONS SERVED:

The facility will serve San Jose and other South Bay cities.

LOCATION:

The facility is located at 1675 Rogers Avenue, San Jose. Refer to attached Site Location Map.



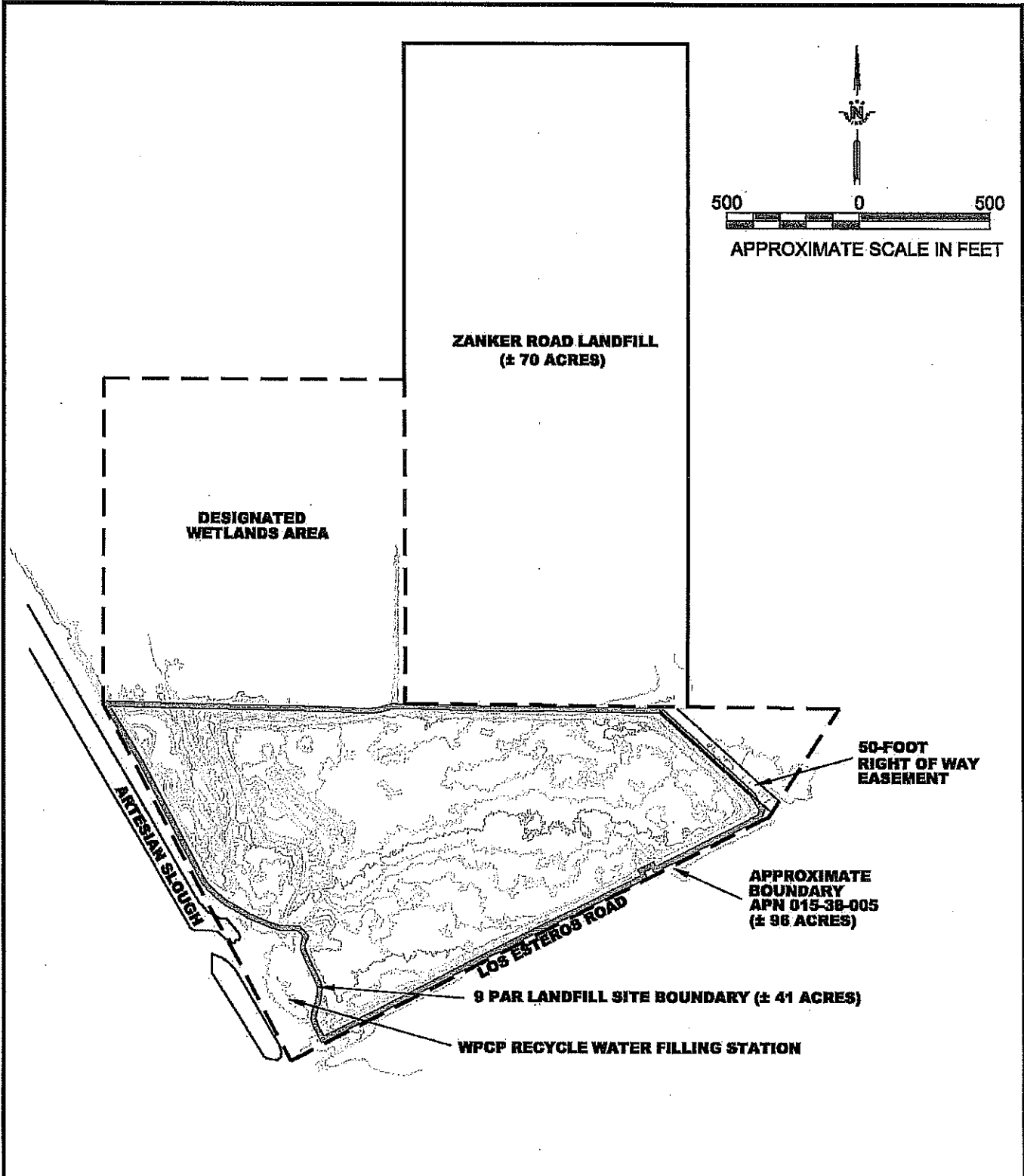
Adapted from USGS Map, California 7.5 Minute Series, Milpitas, CA (Photo revised 1980) Quadrangle.

SCS ENGINEERS

6601 Koll Center Parkway,
Suite 140
Pleasanton, CA 94566
Ph: (925) 426-0080
Fax: (925) 426-0707

FIGURE 1
SITE LOCATION
9 PAR LANDFILL SITE
SAN JOSE, CALIFORNIA

PROJECT NO: 01206142.00		CHECKED BY: JJM
DESIGNED BY: HLG	SCALE: NTS	APPROVED BY: JJM
DRAWN BY: HLG	DATE: 3/07	FILE:



BASE TOPOGRAPHY - 2004 (CITY OF SAN JOSE)

SCS ENGINEERS
ENVIRONMENTAL CONSULTANTS

8601 KOLL CENTER PARKWAY, SUITE 140
PLEASANTON, CALIFORNIA 94688
PHONE: (925) 428-0080 FAX: (925) 428-0707

SITE VICINITY MAP

9 PAR LANDFILL SITE
SAN JOSE, CALIFORNIA

SCALE: AS SHOWN

PROJECT NO. 01208142.00

DATE: 4-6-07

FIGURE NO.

2

**Fact Sheet #25
Zero Waste Energy Development Company Anaerobic Digestion Facility
San Jose, California**

TYPE OF FACILITY:

Zero Waste Energy Development Company (Zero Waste), a joint venture between GreenWaste Recovery, Inc. and its sister company Zanker Road Resource Management (Zanker), is developing the first of its kind in the nation dry fermentation anaerobic digestion facility. Although anaerobic digestion is common in the United States, all the existing processes employ wet feedstock. While the dry-fermentation technology that will be deployed has been commercially demonstrated in Europe for agricultural feedstocks and some MSW feedstocks, there are currently no dry-fermentation anaerobic digestion projects operating in the United States.

FACILITY CAPACITY:

This 150,000 tons per year facility will be developed in three phases; each of the three phases will be capable of processing 50,000 tons per year of organic materials.

FEEDSTOCK:

The facility will process and recover energy from source separated food waste and the organic fraction remaining after materials including municipal solid waste (MSW) are processed at GreenWaste's MRF and create two products: a biogas containing methane and compost. We anticipate phase I of the project will produce 13 million kilowatt hours of electricity per year – enough to power approximately 1,300 homes.

ESTIMATED DIVERSION:

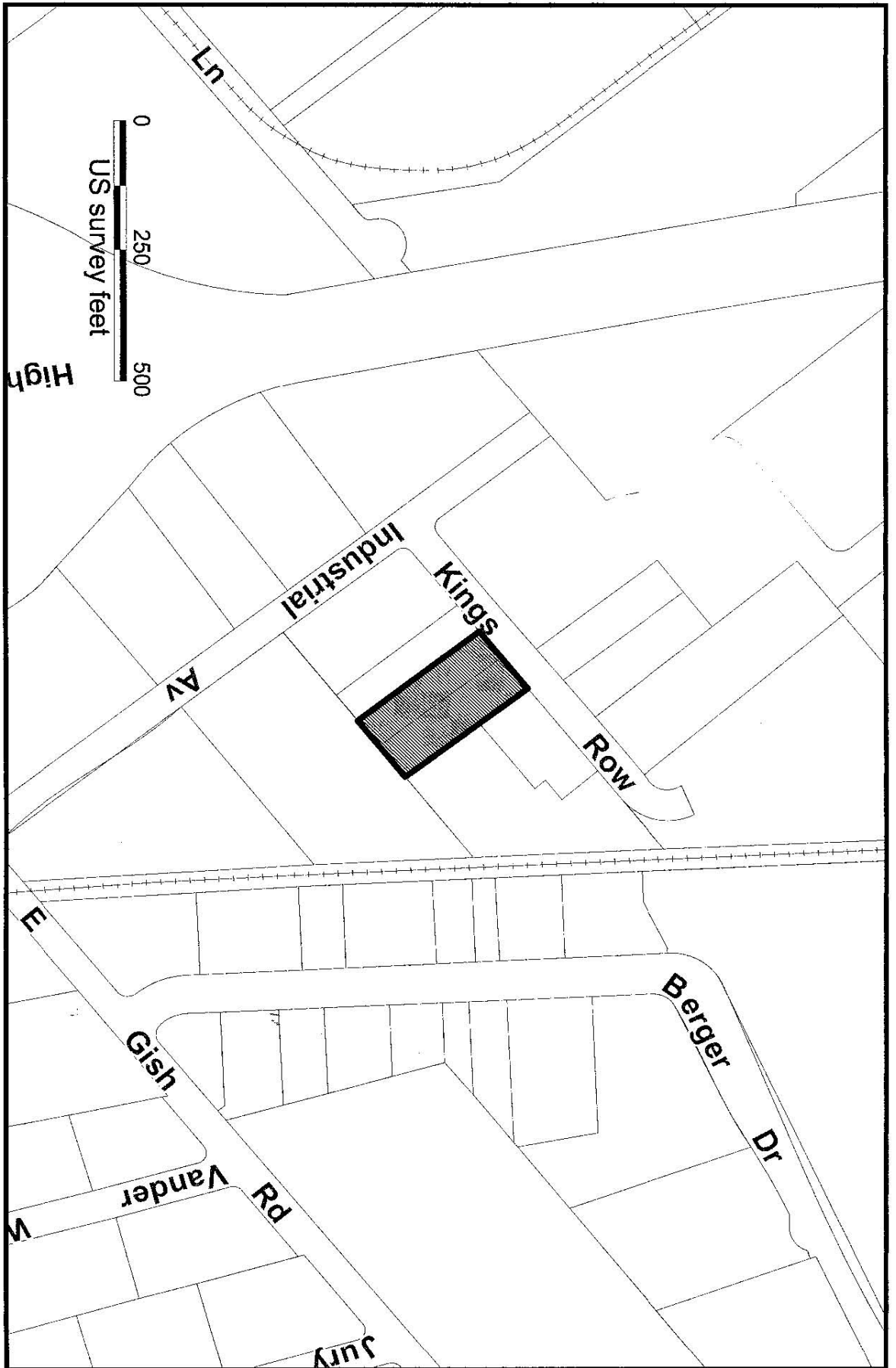
GreenWaste is estimating 80% diversion of green materials and compostable materials.

JURISDICTIONS SERVED:

This facility has been designed to accommodate the current and growing stream of organic waste generated by San Jose and nearby municipalities.

LOCATION:

The proposed site for this facility is located at the former Nine Par landfill at 2100 Los Esteros Road, in the City of San Jose, adjacent to the existing Zanker processing facilities. Refer to attached Site Location Map.



650 Kings Row

File No: SP09-026

District: 4

Quad No: 51



0
250
500
US survey feet

High

Ln

Industrial

Kings

Row

Av

E

Gish

Berger

Dr

Vander

Rd

JURY

05/08/2009

Noticing Radius: 500 feet

**Fact Sheet #26
Green Earth Management LLC Kings Row Recycling Facility
San Jose, California**

TYPE OF FACILITY:

The Green Earth Management LLC Kings Row Recycling Facility is an existing Chipping and Grinding Operation on 0.91 acres of leased property permitted to handle up to 199 tons per day of green materials. Green Earth Management LLC. is planning to expand their material processing and transfer facility in the future. The Kings Row Recycling Facility currently chips and grinds green material for transfer to biomass energy facilities. The planned expanded facility's primary function will be to process green and compostable materials prior to being transferred to compost or energy facilities.

FACILITY CAPACITY:

The facility is currently permitted to handle up to 199 tons per day. A maximum of 600 tons per day of green materials (approximately 75-80% by weight) and compostable materials (approximately 20-25% by weight) is planned in the future.

ESTIMATED DIVERSION:

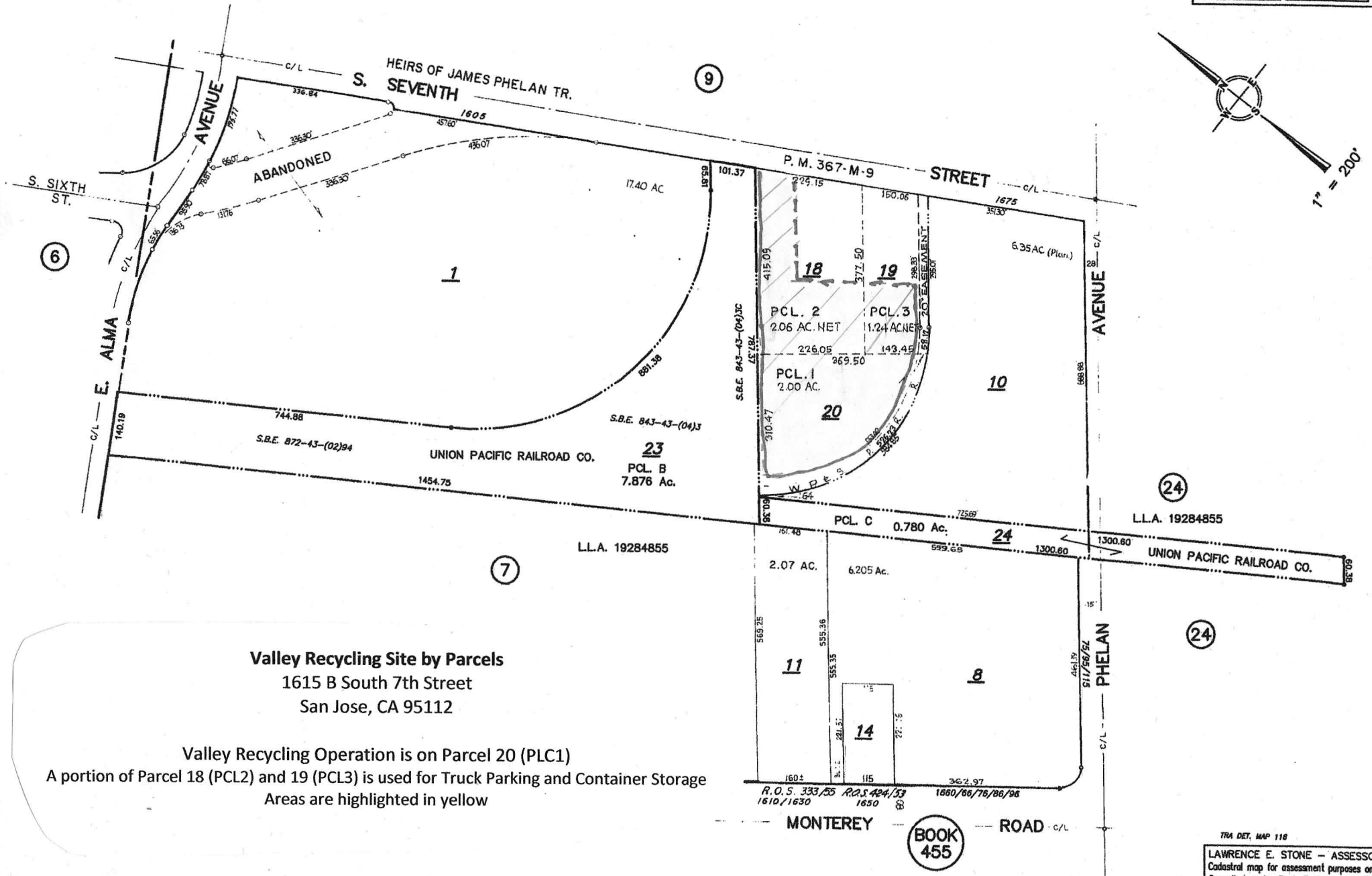
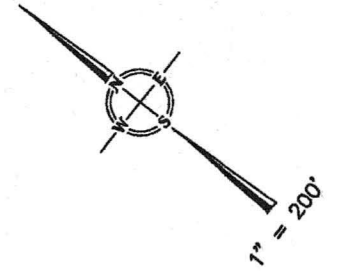
Kings Row Recycling Facility is estimating 99% diversion of green materials and compostable materials.

JURISDICTIONS SERVED:

The Kings Row Recycling Facility will service Santa Clara County and surrounding counties. The facility will be open to the public.

LOCATION:

The facility is located in the Enterprise Zone of the City of San Jose at 650 Kings Row. Refer to attached site location map.



Valley Recycling Site by Parcels
 1615 B South 7th Street
 San Jose, CA 95112

Valley Recycling Operation is on Parcel 20 (PLC1)
 A portion of Parcel 18 (PCL2) and 19 (PCL3) is used for Truck Parking and Container Storage
 Areas are highlighted in yellow

**BOOK
455**

TRA DET. MAP 118
 LAWRENCE E. STONE — ASSESSOR
 Cadastral map for assessment purposes only.
 Compiled under R. & T. Code, Sec. 327.
 Effective Roll Year 2008-2009

**Fact Sheet #27
Environmental Resources Recovery Inc. (Valley Recycling)
San Jose, California**

TYPE OF FACILITY:

Environmental Resource Recovery Inc. (Valley Recycling) is currently permitted as a Medium Volume Construction Demolition Debris Facility. Valley Recycling has been in business since 1986 on property leased from a private party. This facility is currently operating under state and local limits of 175 tons per day. This facility is currently seeking to move a higher state permit “Tier” to implement future plans to process and increase tonnage as a fully permitted solid waste facility, within allowable limits of state and local permit entitlements. The existing medium volume C&D facility has storage bunkers, assorted sizes of dumpster and parking for the roll-off vehicles, and related trucks with compactor-loads.

FACILITY CAPACITY:

A maximum of 175 tons per day of Construction, Demolition and assorted Debris.

ESTIMATED DIVERSION:

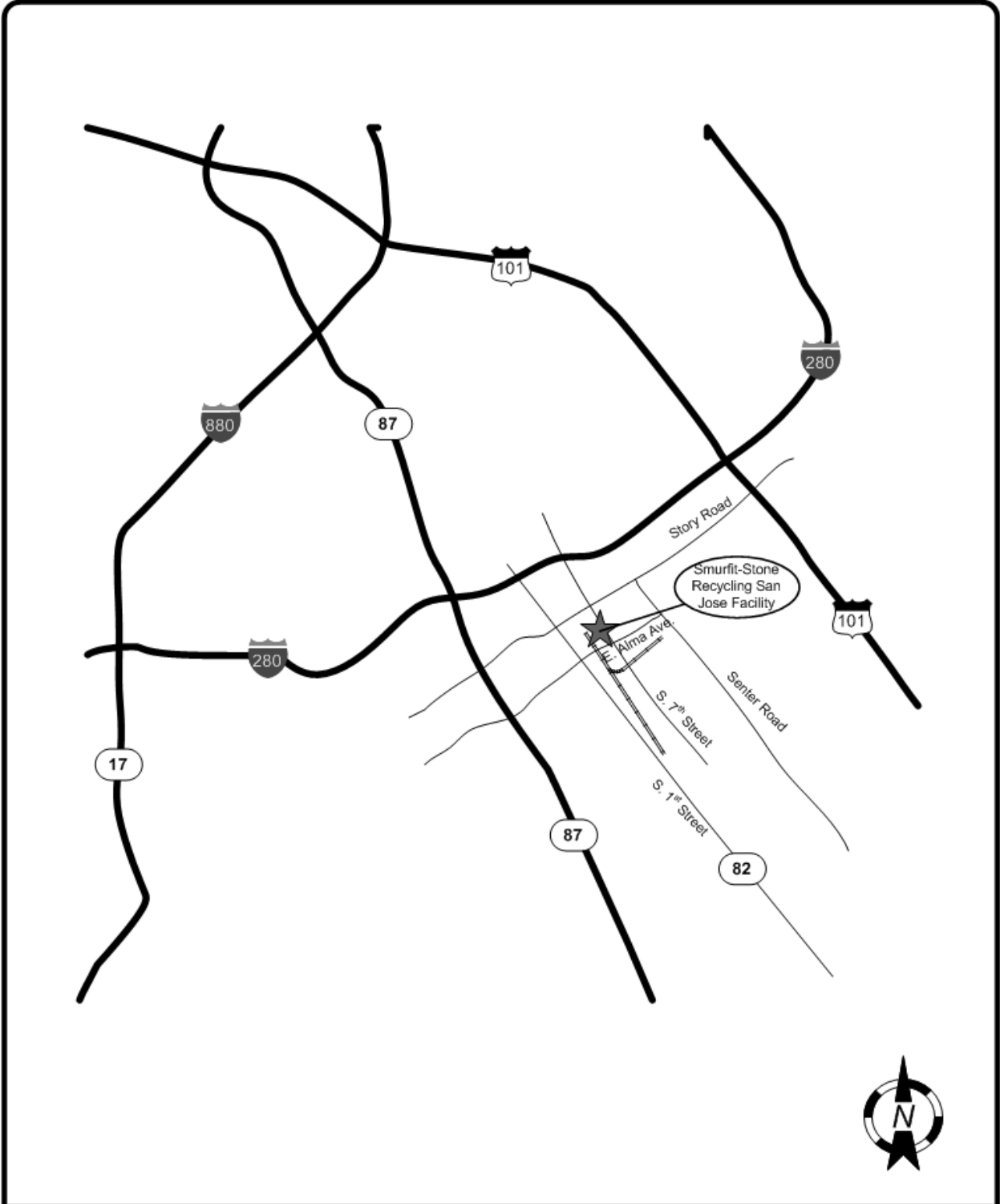
The existing facility recycles less than 5% of the volume received at this time. As new state and local permit entitlements are approved, future operations may increase processing and recycling levels. Their stated goal in the future is to maximize the diversion that may allow up to or in excess of 75% diversion. They are in the early stages with LEA to go to the next “Tier” up and at this time it is uncertain what will be required.

JURISDICTIONS SERVED:

Valley Recycling services the Bay Area and will be looking to expand in the future.

LOCATION:

The facility is located at 1615 B South 7th Street in San Jose. Site Map Attached.



Smurfit-Stone Recycling San Jose Facility Location Map
205 East Alma Avenue, San Jose, CA 95112-5902

**Fact Sheet #28
Smurfit-Stone Recycling San Jose Facility
San Jose, California**

TYPE OF FACILITY:

The Smurfit-Stone Recycling San Jose Facility is a recycling processing and transfer facility receiving commingled and source separated recyclables operated by Smurfit-Stone Recycling and Waste Services. The facility, which is 5.17 acres, began operations in 1982 as a recycling center. This facility is seeking a permit as a solid waste processing and transfer facility in anticipation of incoming recyclables that could be in excess of the state mandated ten percent residual limit. All sorting operations occur within the building. Sorted materials are sent for processing and marketing at other locations. Residual wastes are sent for disposal at permitted landfills. Other activities at this site include: administrative offices and employee parking.

FACILITY CAPACITY:

The Facility's design capacity is 960 tons per day of recyclable commodities including but not limited to cardboard, paper, and beverage containers. Residual solid waste from the operation will be sent on to an authorized facility. Hazardous and other prohibited wastes will be sent to approved recycling, treatment, or disposal facilities.

ESTIMATED DIVERSION:

The anticipated diversion rate for the facility will be over 90 percent.

JURISDICTIONS SERVED:

The Facility will serve the City of San Jose and other jurisdictions in Santa Clara County.

LOCATION:

The facility is located at 205 East Alma Avenue in San Jose. Access to the facility is from East Alma Avenue. Site Map Attached.